



HANMAR



What does Hanmar do:

- production of beet knives,
- production of complete knife frames for drum and disc slicers,
- production of all spare parts for drum and disc slicers,
- renovations of drum and disc slicers

We provide a wide range of services for the sugar industry.



Hanmar started its operations in 1998. Interests and passions of its founder, Mariusz Becker, soon led to the extension of the company's services by professional machining of metals. This was the time when the enterprise developed very dynamically, giving a beginning for other changes - namely the services for the sugar industry.

Our operations are based on a tradition of a family business

- this is what makes us special and outstanding. After Mariusz Becker, the founder of the company, died, the vision for development of the company has been carried on by his daughter, Monika Becker, trying to follow the established paths and cultivate the values passed on by her father, so necessary in contacts with employees and customers.

Thanks to our professional and experienced staff

we could face our customers' expectations. We have been constantly working over development of our company, paying particular attention to the quality of services we provide. Each order is a new challenge for us, and we approach each customer individually. Our activities resulted in close cooperation with customers around the world, among others Europe, Scandinavia, North Africa and China.



Izabela Tłok
Customer service office

biuro@hanmar.info
+48 530 658 221



Our Team



Aneta Szóstek
Finacial Director

aneta.szostek@hanmar.info
+48 534 589 296



Tomasz Jankowski
Technical Director

tomasz.jankowski@hanmar.info
+48 601 547 801



Marek Wadowski
IT Director

informatyk@hanmar.info
+48 516 060 515



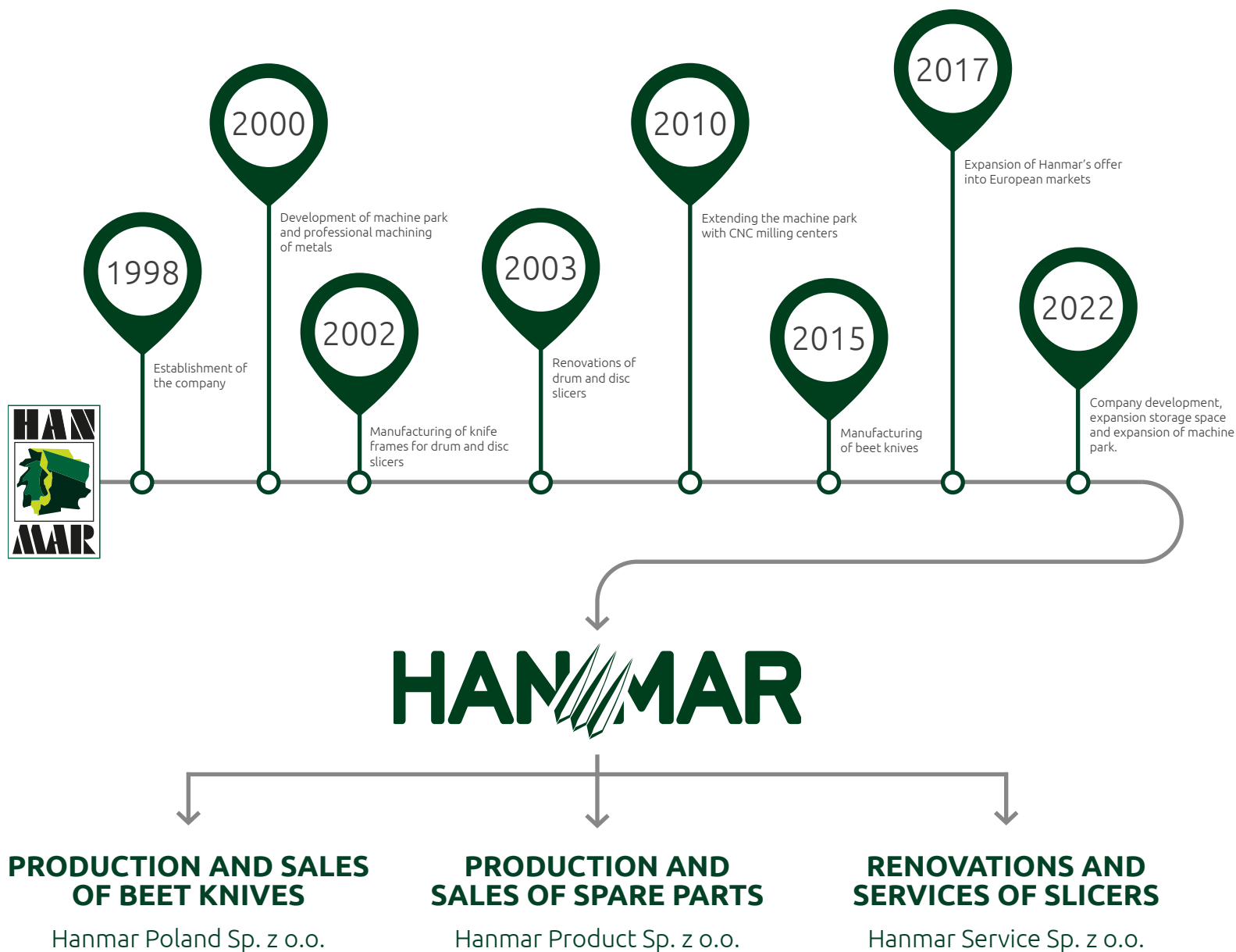
Adam Kaczmarek
General Export Manager

adam.kaczmarek@hanmar.info
+48 531 434 535



Łukasz Tarka
Production Coordinator

lukasz.tarka@hanmar.info
+48 669 098 570



We offer comprehensive solutions for sugar industry,

specializing in production of high quality beet knives
and spare parts for all machines used in sugar industry.

Product offer:

Beet knives

Complete knife frames

Spare parts

- for knife frames,
- mechanical components,
- power hydraulics,
- and pneumatic elements.



Advantages of our company:

Many years of experience

Thanks to our long history in sugar industry, we are able to face even most complex customer needs.

Qualified employers

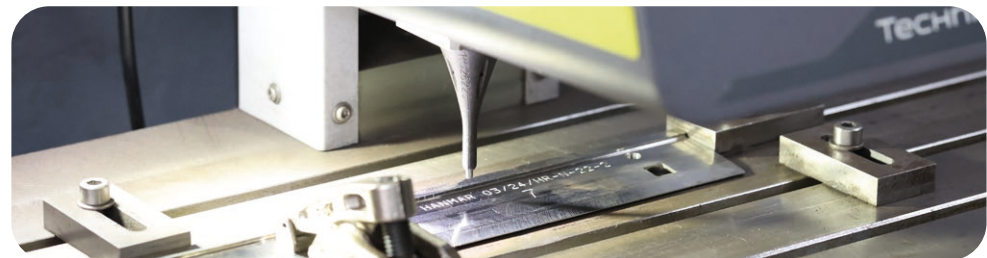
Our team are experts in their fields, ready to take any challenge.

Advance machinery

We have modern equipment that allows us to produce highest quality spare parts.

Adaptation to individual needs

We are able to make any part based on the provided information, technical drawings or samples.



Our company boasts extensive, many years of experience, qualified employees and advance machinery.

Our flexibility and professionalism in customer service make us a partner you can rely on.

Spare parts production



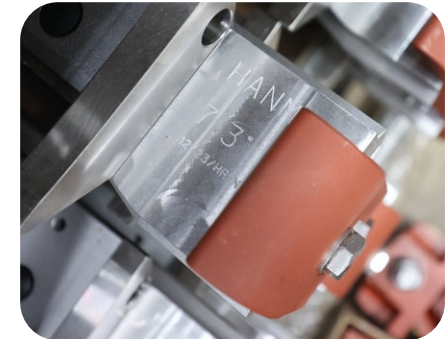
We can produce any part based on old, damaged, used part, technical drawings or provided samples.

Reverse Engineering

Our experienced team of engineers and technicians is ready to meet even most demanding customer needs. We will prepare documentation and produce spare parts based on reverse engineering, provided technical drawings or samples, adapting to individual requirements.

Regeneration and Repairs

We offer comprehensive renovations and repairs of various machine, mechanical, hydraulic and pneumatic components. Whatever your needs, we are ready to help by providing new spare parts or regenerating existing elements.



We have extensive experience in production spare parts for various types of machines.

Our products are excellent quality and fully compatible with original parts, ensuring the efficiency and reliability of machines.

Availability of spare parts



Extensive warehouse

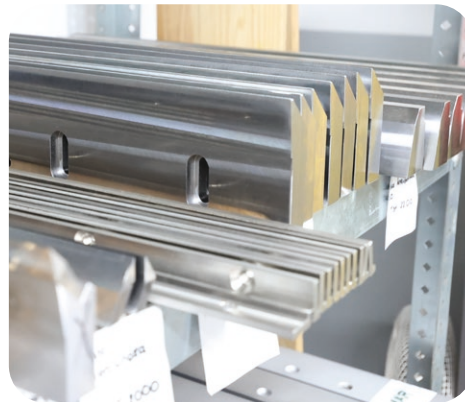
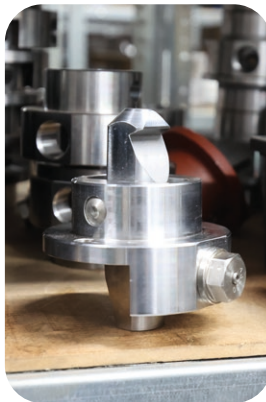
Our warehouse is comprehensively stocked with a wide range of spare parts for various types of machines. We have a large stock of already made elements, which allows us to quickly respond to customer needs.

Most frequently needed items

We focus on storing the most popular and necessary spare parts that are often required in case of machine breakdown. Thank to this, our customers can be sure that the necessary elements will be available immediately.

We implement an inventory monitoring system

Our warehouse will soon be managed using an advanced inventory monitoring system, which will allow us to keep track of the number of available parts. This will enable us to ensure that our stock are always adequately replenished to meet customer needs.



Fast delivery

Thanks to our well organized logistics and cooperation with renowned transport companies, we can guarantee quick delivery of spare parts to our customers, even in the case of urgent orders.

Technical assistance

Our team of technical specialists are available to provide customers with support and technical advice on the selection of appropriate spare parts, installations and maintenance.



Beet Knives

In our production we constantly strive to provide the highest quality beet knives.

We use only the highest quality materials, which are characterized by very high durability and excellent abrasion resistance. It is these features that make our knives reliable and guarantee long-term effectiveness.



Our dedicated team constantly works to improve production processes and materials used to meet requirements of our customers. **Thanks to this, we can ensure that each of our knives meets the highest quality standards.**

In our production we care about quality of the knives and quality of the entire production process. Thanks to strict quality control at every stage, we can ensure that our knives are reliable and in line with the expectations of our customers.

Nasze zaangażowanie w doskonalenie jakości oraz ciągły rozwój sprawiają, że jesteśmy partnerem, na którym możesz polegać, zapewniając Ci niezawodność i efektywność w produkcji z wykorzystaniem noży do buraków.



We constantly invest in new technologies and research methods so that we can provide our customers with even better solutions.

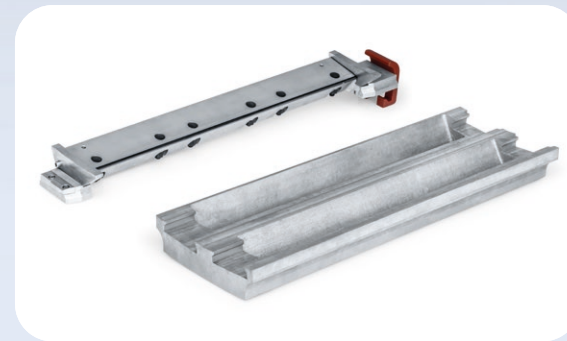
Our production park is equipped with the most modern equipment that allows us to produce knives with highest quality and additionally detailed strength tests and material analyzes ensure that each of our beet knives meets all technical requirements.



We make all types of knives
not sandblasted or sandblasted.
Depending on customer's order.

ARTICLE ID	TYPE	PEAKS NUMBER	FIXING	CORNICES	LENGHT	WIDTH	SHANK THICKNESS	HEIGHT	SUBSTITUTE
A1023 7	A	23	8,69	X	200	87	7,0-7,2	10,9-11,0	1-TV-200-23-7A,1-S-200-23-7A
B1023 7	B	23	8,69	X	200	87	7,0-7,2	10,9-11,0	1-TV-200-23-7B,1-S-200-23-7B
A1023 9	A	23	8,69	X	200	89	7,0-7,2	10,9-11,0	EQ/RG/200x89/23A-DA
B1023 9	B	23	8,69	X	200	89	7,0-7,2	10,9-11,0	EQ/RG/200x89/23B-DA
A2023 7	A	23	8,69	-	200	87	7,0-7,2	10,9-11,0	1-T-200-23-7A
B2023 7	B	23	8,69	-	200	87	7,0-7,2	10,9-11,0	1-T-200-23-7B
A2023 9	A	23	8,69	-	200	89	7,0-7,2	10,9-11,0	EDB/TPE/200x89/23A-DA
B2023 9	B	23	8,69	-	200	89	7,0-7,2	10,9-11,0	EDB/TPE/200x89/23B-DA
A1025 7	A	25	8	X	200	87	7,0-7,2	10,7-10,9	1-TV-200-25-7A,1-S-200-25-7A
B1025 7	B	25	8	X	200	87	7,0-7,2	10,7-10,9	1-TV-200-25-7B,1-S-200-25-7B
A1025 9	A	25	8	X	200	89	7,0-7,2	10,7-10,9	EQ/RG/200x89/25A-DA
B1025 9	B	25	8	X	200	89	7,0-7,2	10,7-10,9	EQ/RG/200x89/25B-DA
A2025 7	A	25	8	-	200	87	7,0-7,2	10,7-10,9	1-T-200-25-7A
B2025 7	B	25	8	-	200	87	7,0-7,2	10,7-10,9	1-T-200-25-7B
A2025 9	A	25	8	-	200	89	7,0-7,2	10,7-10,9	EDB/TPE/200x89/25A-DA
B2025 9	B	25	8	-	200	89	7,0-7,2	10,7-10,9	EDB/TPE/200x89/25B-DA
A1027 7	A	27	7,41	X	200	87	7,0-7,2	10,6-10,8	1-TV-200-27-7A,1-S-200-27-7A
B1027 7	B	27	7,41	X	200	87	7,0-7,2	10,6-10,8	1-TV-200-27-7B,1-S-200-27-7B
A1027 9	A	27	7,41	X	200	89	7,0-7,2	10,6-10,8	EQ/RG/200x89/27A-DA
B1027 9	B	27	7,41	X	200	89	7,0-7,2	10,6-10,8	EQ/RG/200x89/27B-DA
A2027 7	A	27	7,41	-	200	87	7,0-7,2	10,6-10,8	1-T-200-27-7A
B2027 7	B	27	7,41	-	200	87	7,0-7,2	10,6-10,8	1-T-200-27-7B
A2027 9	A	27	7,41	-	200	89	7,0-7,2	10,6-10,8	EDB/TPE/200x89/27A-DA
B2027 9	B	27	7,41	-	200	89	7,0-7,2	10,6-10,8	EDB/TPE/200x89/27B-DA
A1028 7	A	28	7,14	X	200	87	6,0-6,2	10,4-10,6	1-TV-200-28-6A,1-S-200-28-6A
B1028 7	B	28	7,14	X	200	87	6,0-6,2	10,4-10,6	1-TV-200-28-6B,1-S-200-28-6B
A1028 9	A	28	7,14	X	200	89	6,0-6,2	10,4-10,6	EQ/RG/200x89/28A-DA
B1028 9	B	28	7,14	X	200	89	6,0-6,2	10,4-10,6	EQ/RG/200x89/28B-DA
A2028 7	A	28	7,14	-	200	87	6,0-6,2	10,4-10,6	1-T-200-28-6A
B2028 7	B	28	7,14	-	200	87	6,0-6,2	10,4-10,6	1-T-200-28-6B
A2028 9	A	28	7,14	-	200	89	6,0-6,2	10,4-10,6	EDB/TPE/200x89/28A-DA
B2028 9	B	28	7,14	-	200	89	6,0-6,2	10,4-10,6	EDB/TPE/200x89/28B-DA





Knife Frames

we produce all types of knife frames

The frames are customizable at the customer's request. We do everything types of caps, washers and quarter rounds.



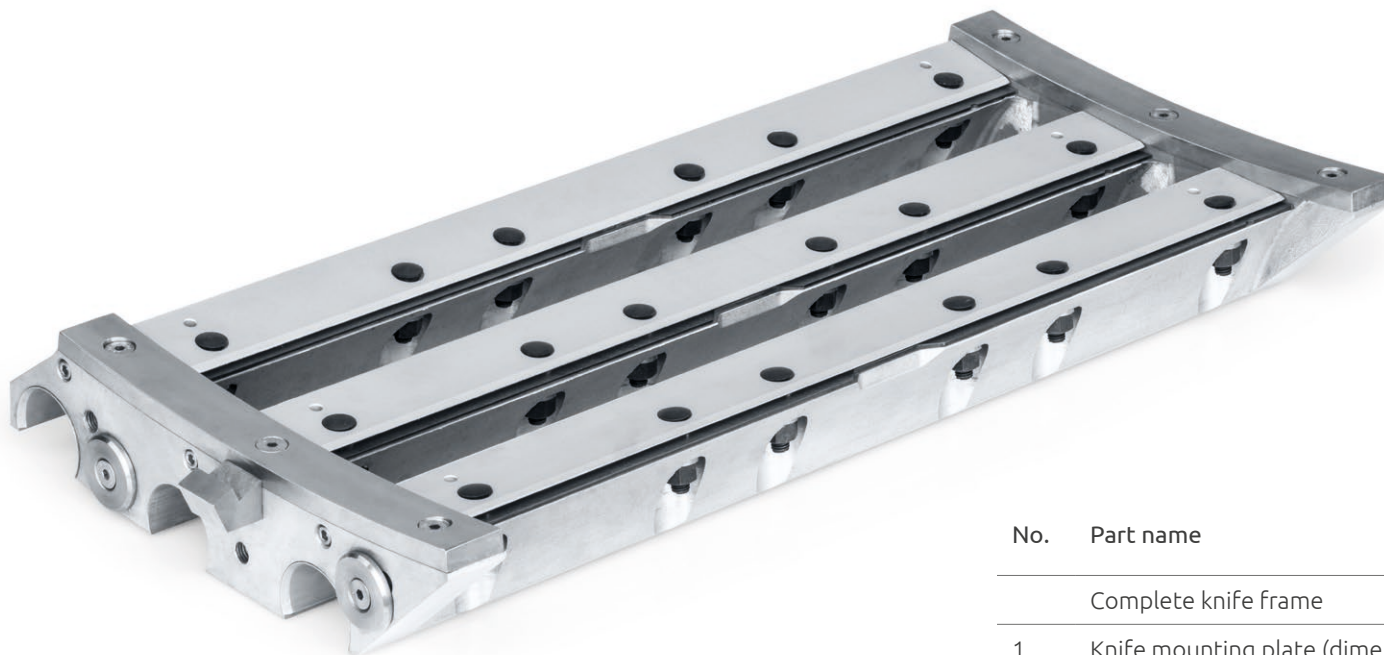
Knife Frame

HANMAR HR-N-22-1

Substitute: TSM 2200 x 22 x 600



No.	Part name	Symbol HANMAR
	Complete knife frame	HR-N-22-1
1.	Knife mounting plate (dimension should be given at placing an order)	HR-N-22-2
2.	Side arc molding (dimension should be given at placing an order)	HR-N-22-3
3.	Knife pad	HR-N-22-4
4.	Rod adjusting the height of the shear bar (dimension should be given at placing an order)	HR-N-22-5
5.	Hook (gripper)	HR-N-22-6
6.	Aluminum guide	HR-N-22-7
7.	Bumper	HR-N-22-8
8.	Knife mounting screw M10x45	HR-N-22-9/a
9.	Cup washer	HR-N-22-9/b
10.	Half - round nut M10	HR-N-22-9/c
11.	Cotter pin 2.5x16	HR-N-22-9/d

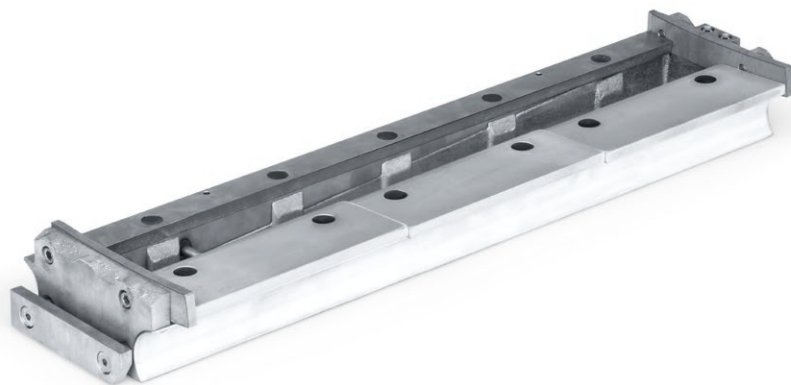


Knife Frame

HANMAR HR-N-18-1

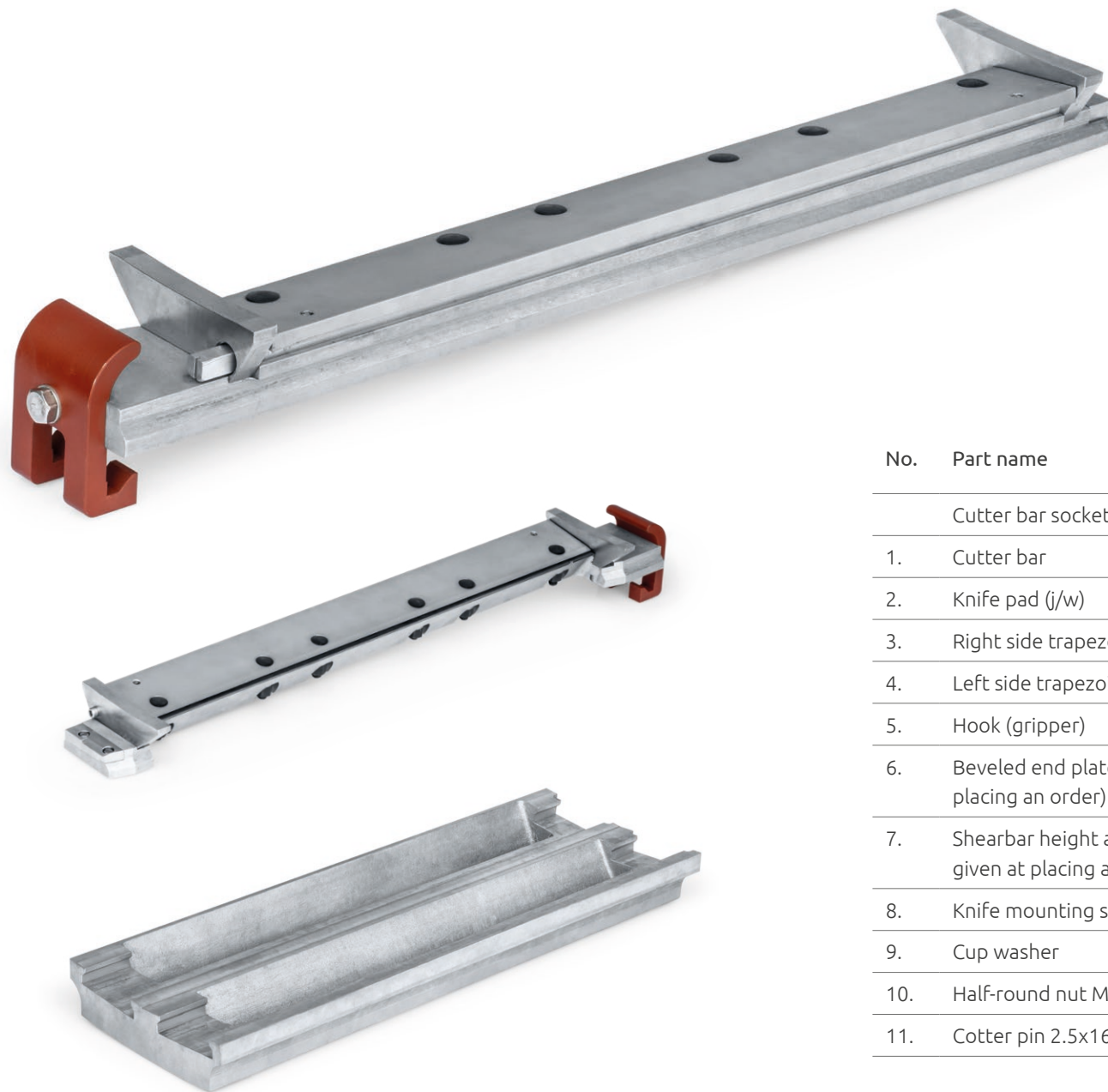
Substitute: TSM 1800 x 18 x 600

No.	Part name	Symbol HANMAR
	Complete knife frame	HR-N-18-1
1.	Knife mounting plate (dimension should be given at placing an order)	HR-N-18-2
2.	Side arc molding (dimension should be given at placing an order)	HR-N-18-3
3.	Knife pad	HR-N-18-4
4.	Rod adjusting the height of the shear bar (dimension should be given at placing an order)	HR-N-18-5
5.	Hook (gripper)	HR-N-18-6
6.	Aluminum guide	HR-N-18-7
7.	Bumper	HR-N-18-8
8.	Knife mounting screw M10x45	HR-N-18-9/a
9.	Cup washer	HR-N-18-9/b
10.	Half - round nut M10	HR-N-18-9/c
11.	Cotter pin 2.5x16	HR-N-18-9/d



Knife Frame
HANMAR HR-N-20-1
 Substitute: TSM 2000 x 40 x 600

No.	Part name	Symbol HANMAR
	Knife frame	HR-N-20-1
1.	Knife mounting plate	HR-N-20-2
2.	Shearbar	HR-N-20-3
3.	Right side arch molding	HR-N-20-4
4.	Left side arch molding	HR-N-20-5
5.	Wedge adjusting the height of the shearbar (dimension should be given at placing an order)	HR-N-20-6
6.	Grip side strip	HR-N-20-7
7.	Hitch spacer	HR-N-20-8
8.	Washer for the spacer sleeve	HR-N-20-9
9.	Slatted cube	HR-N-20-10
10.	Overlay of the mounting guide (aluminum)	HR-N-20-11
11.	M4 threaded insert	HR-N-20-12
12.	M4x12 screw	HR-N-20-13
13.	Knife mounting screw M10x45	HR-N-20-14/a
14.	Washer Ø10,5	HR-N-20-14/b
15.	M10 /s13 flange nut	HR-N-20-14/c
16.	Cotter pin 2.5x16	HR-N-20-14/d



Knife Frame

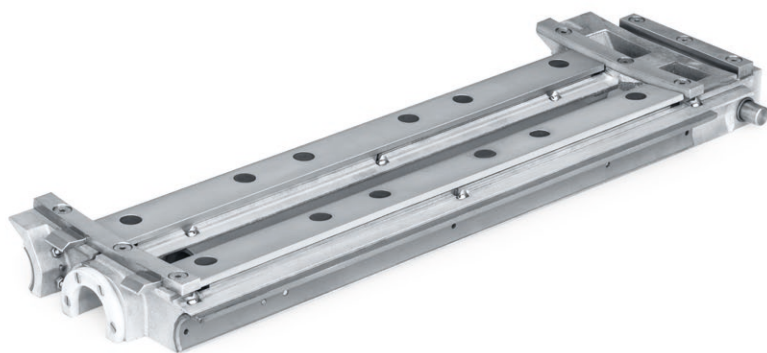
HANMAR HR-N-16-1

Substitute: TSM 1600 x 42 x 600

No.	Part name	Symbol HANMAR
	Cutter bar socket	HR-N-G-16-1
1.	Cutter bar	HR-N-16-1
2.	Knife pad (j/w)	HR-N-16-3
3.	Right side trapezoidal ankle	HR-N-16-4
4.	Left side trapezoidal ankle	HR-N-16-5
5.	Hook (gripper)	HR-N-16-6
6.	Beveled end plate (dimension should be given at placing an order)	HR-N-16-7
7.	Shearbar height adjustment rod (dimension should be given at placing an order)	HR-N-16-8
8.	Knife mounting screw M10x45	HR-N-16-9/a
9.	Cup washer	HR-N-16-9/b
10.	Half-round nut M10	HR-N-16-9/c
11.	Cotter pin 2.5x16	HR-N-16-9/d



Knife Frame
HANMAR HR-F-20-1
Substitute: CRT 2000 x 60 x 600



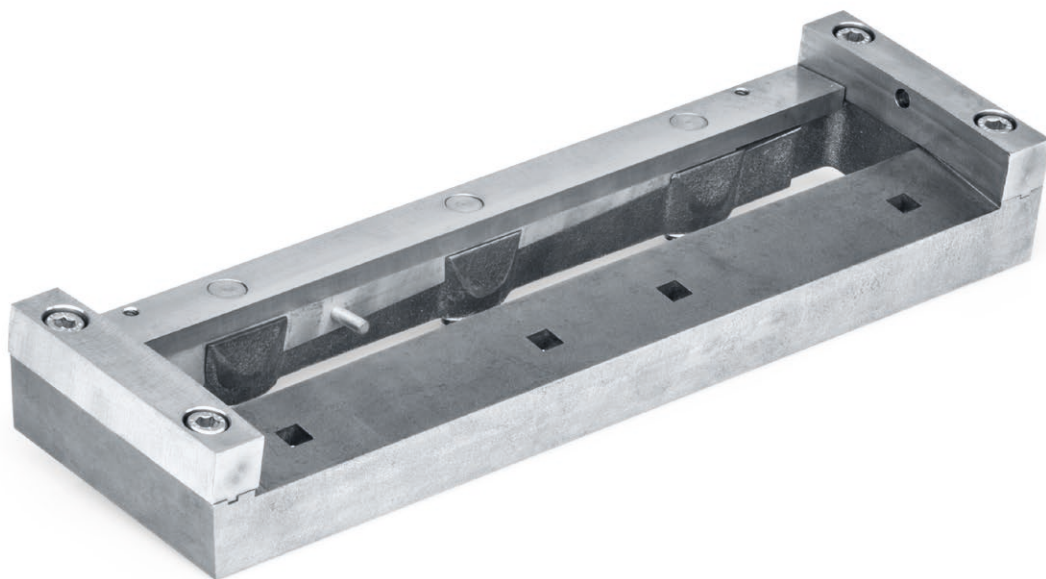
No.	Part name	Symbol HANMAR
	Knife frame	HR-F-20-1
1.	Knife mounting plate with V-blocks - type C	HR-F-20-2/C
2.	Knife mounting plate with V-blocks - type D	HR-F-20-2/D
3.	Knife mounting plate without prisms - type N	HR-F-20-2/N
4.	Right side arched strip - locking	HR-F-20-3
5.	Left side arch molding	HR-F-20-4
6.	Hitch bar	HR-F-20-5
7.	Wedge adjusting the height of the shearbar - type B	HR-F-20-9/B
8.	Wedge adjusting the height of the shearbar - type C	HR-F-20-9/C
9.	Wedge adjusting the height of the shearbar - type D	HR-F-20-9/D
10.	Wedge adjusting the height of the shearbar - type E	HR-F-20-9/E
11.	Locking mechanism pin	HR-F-20-10
12.	Locking mechanism sleeve	HR-F-20-11
13.	Thrust washer	HR-F-20-12
14.	Nose screw for attaching knives	HR-F-20-13/a
15.	High nut M10	HR-F-20-13/b
16.	Washer Ø10,5	HR-F-20-13/c
17.	Spring sleeve	HR-F-20-13/d
18.	Knife mounting screw M10x45	HR-F-20-13/a/N
19.	Half-round nut M10	HR-F-20-13/b/N
20.	Cup washer	HR-F-20-13/c/N
21.	Cotter pin 2.5x16	HR-F-20-13/d/N

When placing an order, specify the layout of the guides
and the material for the guides.



Knife Frame
HANMAR HR-F-16-1
 Substitute: CRT 1600 x 32 x 600

No.	Part name	Symbol HANMAR
	Knife frame	HR-F-16-1
1.	Knife attachment plate	HR-F-16-2
2.	Side arch molding	HR-F-16-3
3.	Hitch bar	HR-F-16-4
4.	Locking mechanism pin	HR-F-16-5
5.	Locking mechanism sleeve	HR-F-16-6
6.	Expansion pin Ø4x30	HR-F-16-7
7.	Locking mechanism spring	HR-F-16-8
8.	Shelter	HR-F-16-9
9.	Nose screw for attaching knives	HR-F-16-13/a
10.	High nut M10	HR-F-16-13/b
11.	Washer Ø10.5	HR-F-16-13/c
12.	Spring sleeve	HR-F-16-13/d



Knife Frame

HANMAR HR-T-N-22

Substitute: SM 2200 x 24 x 600



No.	Part name	Symbol HANMAR
	Knife frame	HR-T-N-22-1
1.	Shelter	HR-T-N-22-2
2.	Wedge adjusting the height of the shear bar (dimension should be given at placing an order)	HR-T-N-22-4
3.	Nose screw for fixing the shear bar	HR-T-N-22-5
4.	Lateral malleolus convex	HR-T-N-22-8
5.	Lateral ankle concave	HR-T-N-22-9

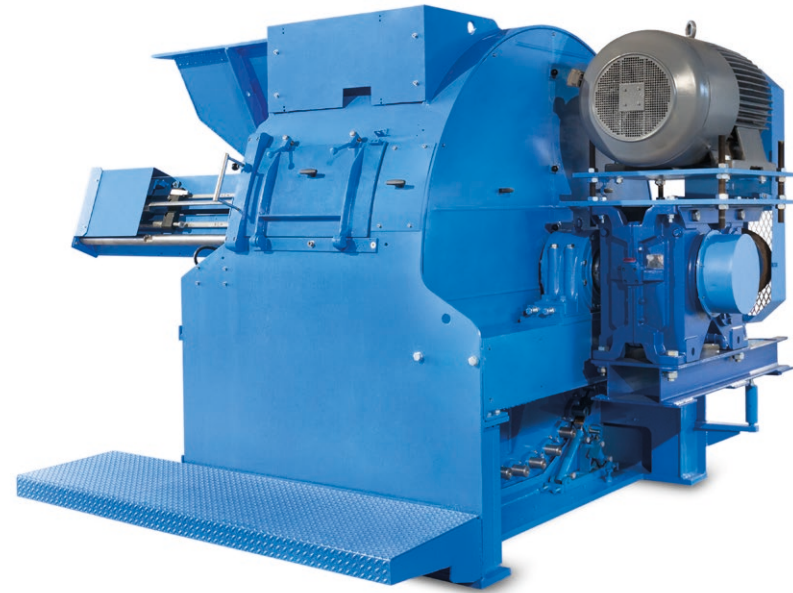


We perform renovations of drum and disc slicers.

All works are carried out by Hanmar experienced employees, and this guarantees top quality of the performed works along with compliance with both the national and European standards. Actions and knowledge of our staff guarantee reliability of the renovated machinery, and thus the satisfaction of our customers.

A renovation may include:

- renovation and replacement of all mechanic parts and components,
- renovation and replacement of hydraulic parts and components,
- renovation or replacement of drive and control system with a new model with higher parameters,
- renovation of the electric system.



Hanmar is a leader in renovation and maintenance of machinery used in the sugar industry.

Our experienced team can cope with any malfunction, allowing our customers to expect what follows:

- professional staff knowing the industry,
- a maintenance team carefully selected to suit the malfunction,
- quick response to our customers' problems.

The scope of machinery maintenance includes first of all:

- mechanical service,
- control electronics service,
- machine drives service,
- power supply systems service,
- etc.



HANMAR

Dworcowa 26 street
87-140 Chełmża
Poland

tel. +48 56 300 00 62
biuro@hanmar.info
www.hanmar.info